



MERCHANT SQUARE EAST LONDON, W2

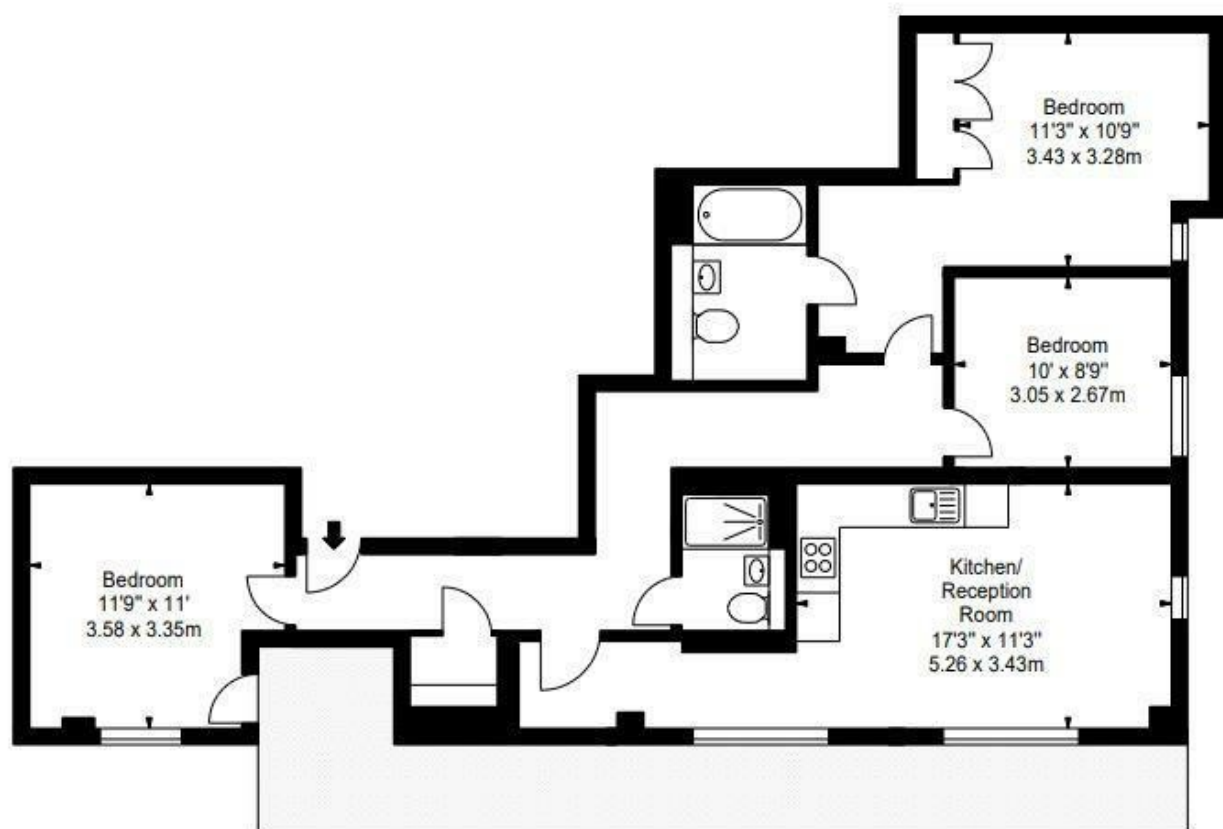
£1,620 PER WEEK

This apartment steals the show with amazing views from its beautiful south facing balcony. The apartment is situated on the 14th floor of this prestigious building which features concierge service, lift service and secure underground parking.

The spacious and bright apartment comprises a beautiful reception room with a new and modern fitted open plan kitchen, three large bedrooms and two bathrooms.

The apartment offers easy access to superb transport links such as Paddington Train Station (Bakerloo, Hammersmith & City, Circle, District lines and Heathrow express) and Edgware Road (Circle, District and Bakerloo lines).

PMP | INTERNATIONAL



Energy Efficiency Rating		
	Current	Potential
Very energy efficient - lower running costs		
(92 plus) A		
(81-91) B		
(69-80) C		
(55-68) D		
(39-54) E		
(21-38) F		
(1-20) G		
Not energy efficient - higher running costs		
England & Wales	EU Directive 2002/91/EC	

Agents Note: Whilst every care has been taken to prepare these particulars, they are for guidance purposes only. All measurements are approximate and are for general guidance purposes only and whilst every care has been taken to ensure their accuracy, they should not be relied upon and potential buyers/tenants are advised to recheck the measurements

London
PMP International
94 Belsize Lane
Belsize Park
London
NW3 5BE

020 7701 2878
info@pmpl.co.uk
www.pmpl.co.uk

PMP | INTERNATIONAL